

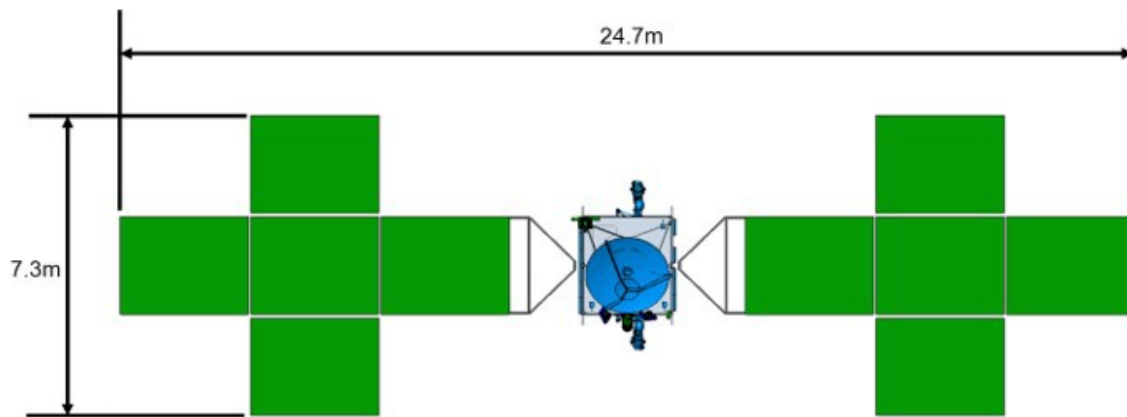
Make Your Own Psyche Mission Spacecraft Paper Model

NASA Psyche Mission

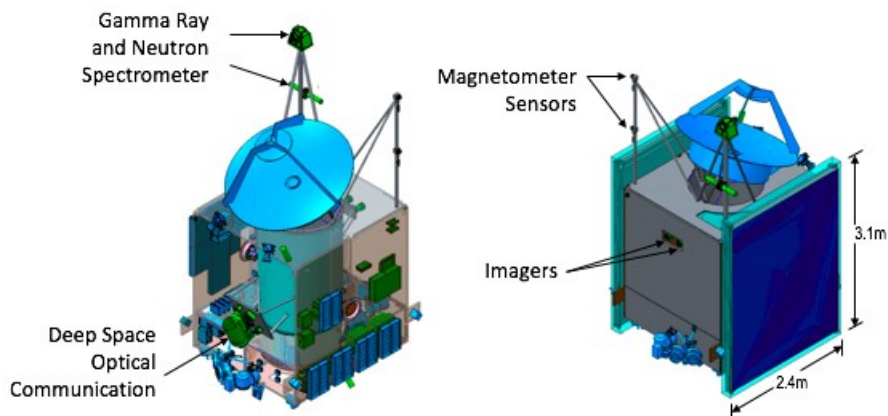
Psyche is both the name of an asteroid orbiting the Sun between Mars and Jupiter — and the name of a NASA space mission to visit that asteroid, led by Arizona State University. The mission was chosen by NASA for the agency's Discovery Program. The Psyche spacecraft is targeted to launch in 2022 and travel to the asteroid using solar-electric propulsion, arriving in 2026. After arrival, the mission plan calls for 21 months spent at the asteroid, mapping it and studying its properties.

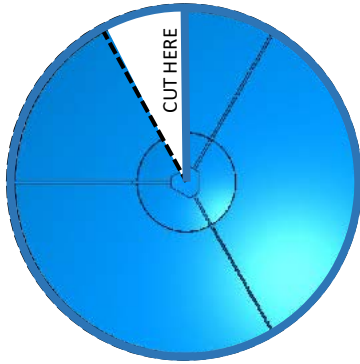
Psyche Spacecraft

The full spacecraft, including the solar panels, is 24.76 meters (~81 feet) long by 7.34 meters (~24 feet) wide. That is about the size of a (singles) tennis court.



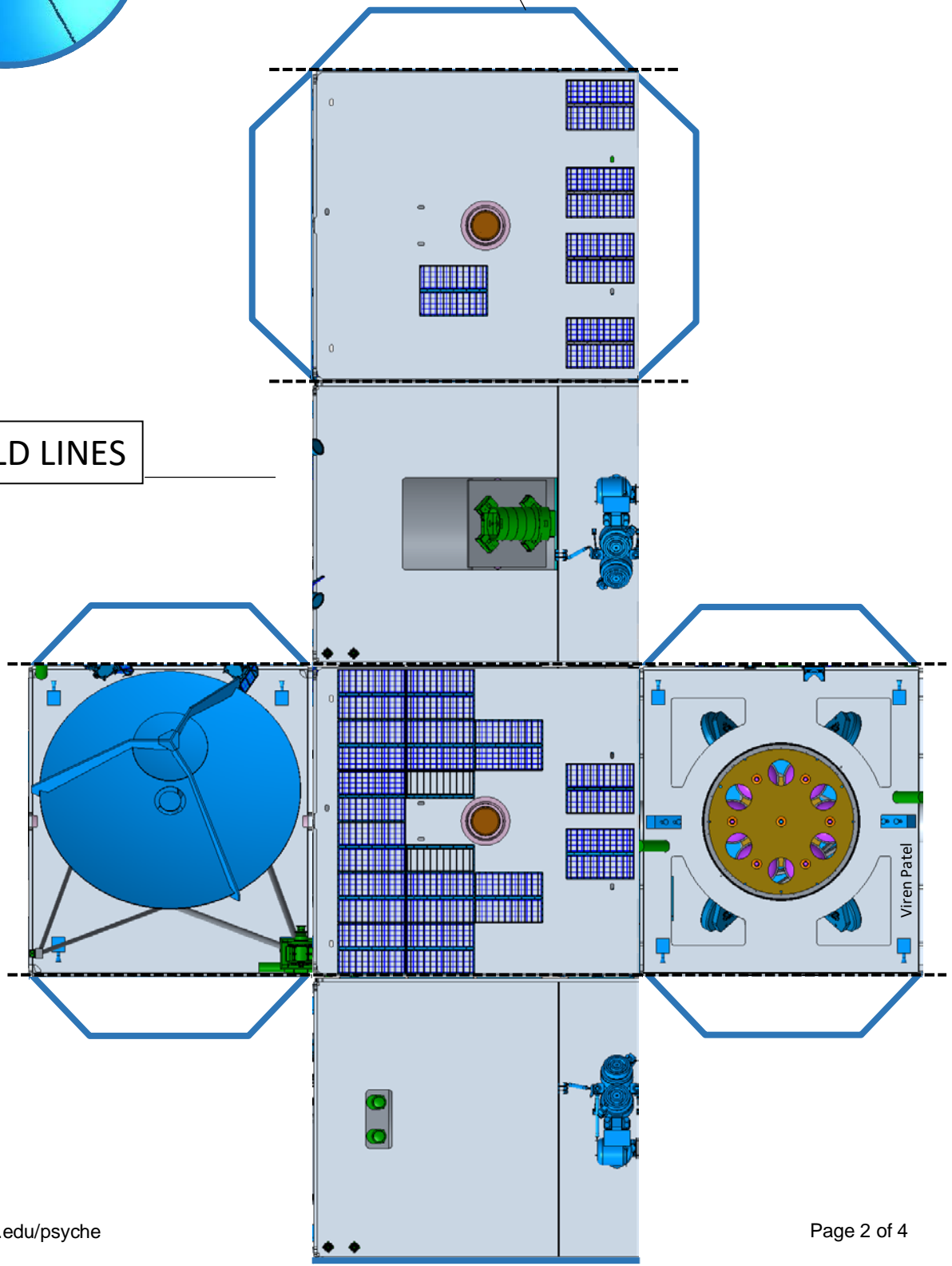
The bus (body) of the spacecraft is 3.1 meters (~10 feet) long by 2.4 meters (almost 8 feet) wide. That is: slightly bigger than a Smart Car; about the size of a garden storage shed; as tall as a regulation basketball hoop.

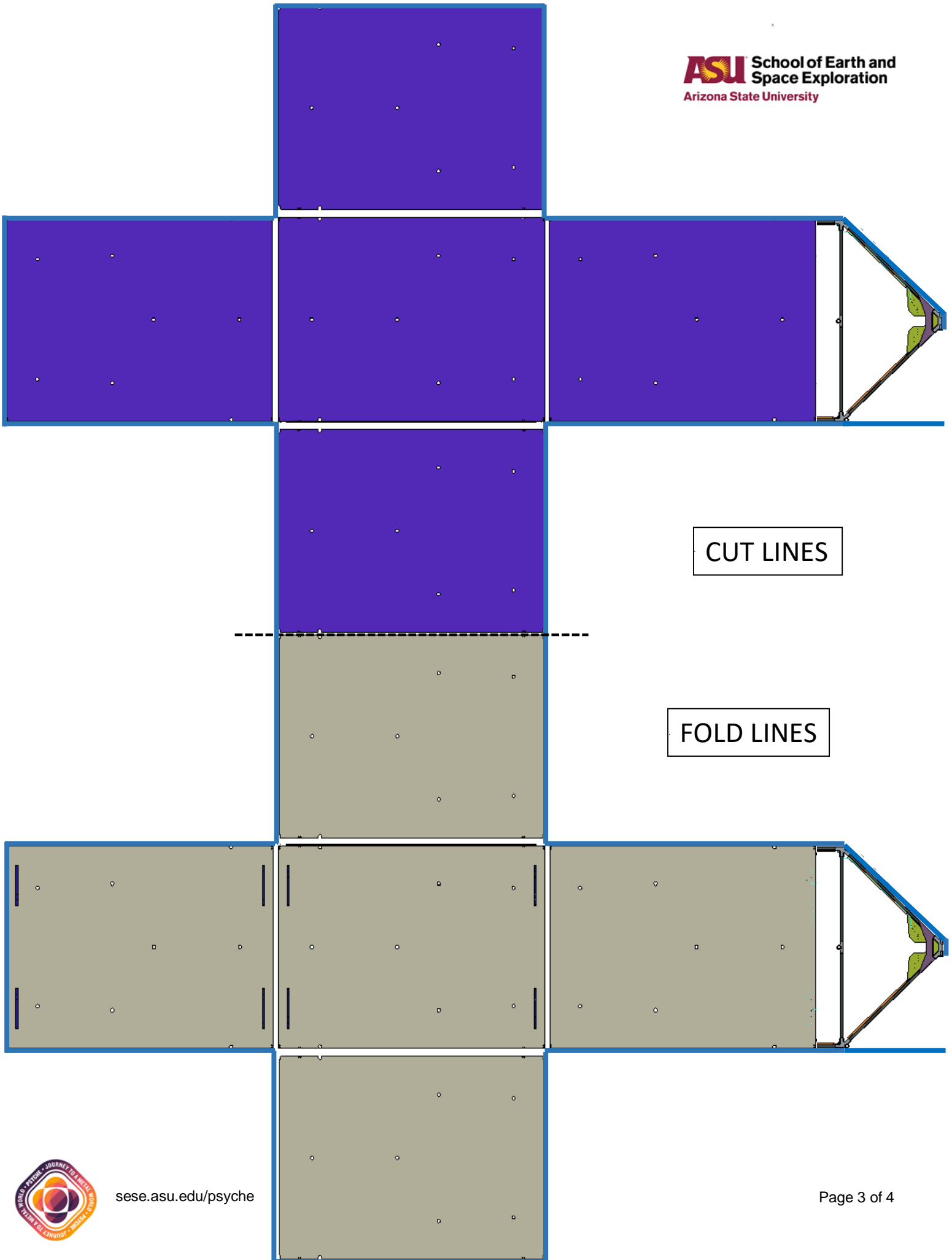




CUT LINES

FOLD LINES





CUT LINES

FOLD LINES



